

ZELENTeCH²

ZT-100 I-Series Water-Cut Meters



- Full Bore
- Isokinetic
- 8-48 inch
- Safe Anti-Blowout design





ZT-100 I-Series Water-Cut Meters

The ZelenTech I-Series is a new range of insert Watercut Monitors (also known as BS&W, OWD, WFM or Water in Oil Analyzers) developed in-house.

The I-Series is inserted into large lines through a 2 inch or 3 inch nozzle.

The ZelenTech ZT-100 Watercut Monitor determines the percent watercut in an oil emulsion without requiring the physical separation of the fluids. The emulsion stream is continuously monitored for capacitance and converted into percentage of water by the Watercut Monitor logic.

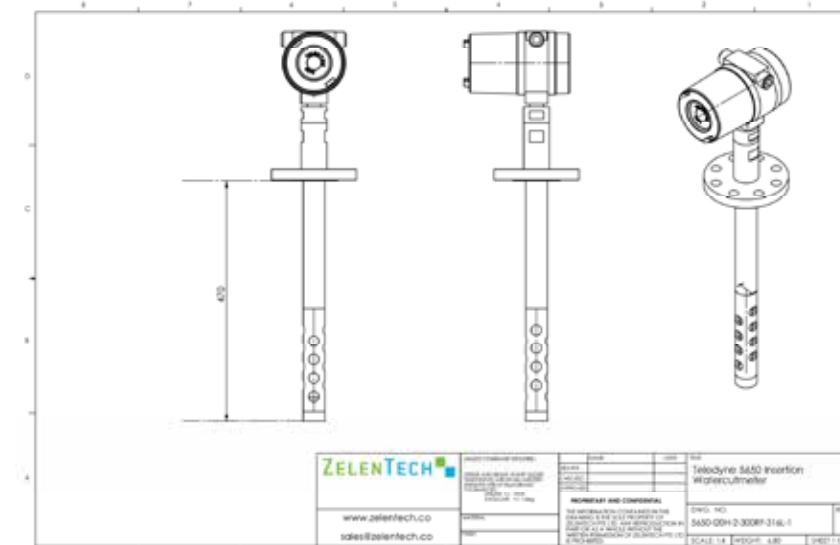
ZelenTech ZT-100 Watercut Monitors (also known as BS&W, OWD, WFM or Water in Oil Analyzers) offers you unmatched flexibility as we offer virtually unlimited number of configurations.

The ZelenTech ZT-100 I-Series can optionally be supplied with a spool section prepared with port for watercut meter, port for representative sampling as well as built in static mixer. The mixer will ensure that a well mixed and homogenized stream will reach the sensor. We configure mixer elements and spacing in accordance with standards such as ISO 3171 and API MPMS8.2 to ensure that the sensor will see a truly representative view of what is going on in your pipes.

SPECIFICATION

Power	24VDC (Loop Powered)
Power Consumption	Max 0.66W
Output	4-20mA
Digital Interface	HART
Operating Temp	Process Fluid: Standard version 0-120 deg C. High Temp version 0-240 deg C Ambient: -40 to 65 deg C
Display	Blind. Local display available as separate item.
Accuracy	+/- 0.01% up to 1% water cut +/- 0.05% up to 5% water cut +/- 0.1% from 5% to 10% water cut +/- 0.2% from 10% to 25% water cut
Resolution	0.003%
Certification	FM, ATEX, GOST-R, CSA (Pending)
Wetted Parts	SS316L, Duplex, Super Duplex, Hastelloy
Enclosure	IP66/67 Nema 4X&7, Aluminum or SS316L
Sour Sevice	NACE MR0175 / ISO15156
Operating Pressure	Flange Rating
Process Connections	ANSI Flanged: 150#, 300#, 600#, 900#, 1500# (Select models) DN and JIS flanges, 10, 16, 40, 65, 100 bar
Insertion Port	2 or 3 inch.
Throw Length	Made to suit pipes from 8 inch to 48 inch.
Pressure Certifications	PED (EU Zone) available for select models CRN (Canadian registration) available for select models
EMC and FCC	Verified Compliant

TYPICAL MODEL



DESIGN AND INTEGRITY

The ZelenTech ZT-100 Watercut Meters are built to strict standards. Ability to accommodate a vast variety of Piping Specifications ensures that the meter becomes an integral part of the piping system and not a weak link.

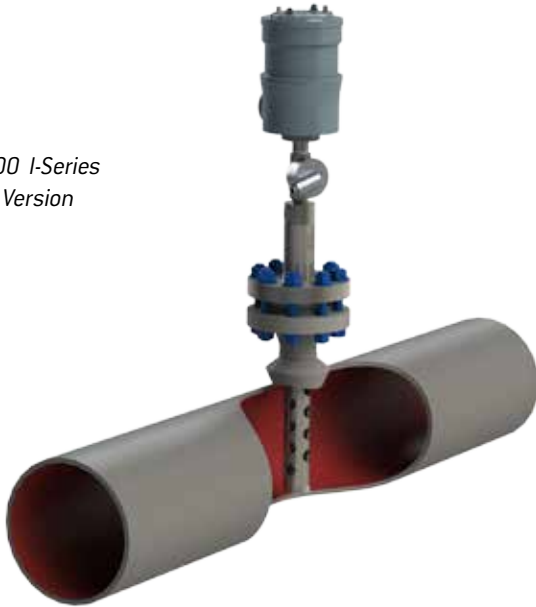
ZelenTech's ISO9001 quality system is able to accommodate any customer requirements for documentation, material traceability and quality assurance.

FLOW CONDITIONING

The ZT-100 I-Series Watercut Meter can be supplied with spool section complete with Static Mixer providing a well conditioned stream both for inline measurement and sampling as well as sampling port providing means of verifying meter accuracy and allow calibration to representative media stream.

Designed in accordance with standards such as API 8.2 and ISO 3171.

ZT-100 I-Series
ATEX Version



ZT-100 I-Series
FM Certified



Why ZelenTech?

The ZelenTech ZT100 Watercut Monitor is designed to provide reliable results in environments from the North Sea to Sahara. Offering unmatched flexibility for material, size, features and configurations the ZT100 can be integrated into almost every oil carrying system.

20150123

ZELENTECH

Haldatec Pty Ltd
11/27-33 Thornton Cres
Mitcham VIC 3132
Australia

sales@haldatec.com.au

www.haldatec.com.au