

# XHR311 Datasheet

DUAL-HEATED PRESSURE REGULATOR



Gas  
  Liquid  
  Diaphragm  
  Piston  
  Self-Venting  
  Non-Venting  
 Max Inlet: 414 bar (6,000 psi)  
 Max Outlet: 150 bar (2,175 psi)  
 Cv 0.06



## INTRODUCING THE XHR311...

The XHR311 is a piston-sensed, dual-heated pressure regulator, designed to maintain sample liquids and gases in their vapour state.

Certified to ATEX directive 2014/34/EU, its two 100W heater cartridges, are inserted in spiral machined sheaths, which agitate the media to help with the heat transfer and analysis process. Alternatively, the steam-heated option replaces the heater cartridges with steam tubes.

The propriety PCB is easy to wire and incorporates a potentiometer to adjust the heater temperature setting, and independent channel isolation switches for liquid sampling. In addition, its electrical enclosure meets the requirements of IP66.

## ATEX MARKING

The marking on the equipment includes the following information:

Ex II 2 G T3  
 Ex db IIC T3  
 Ta = -40°C to +60°C

## FEATURES AND BENEFITS

### 1 2 X 100W HEATER CARTRIDGES

Efficient heaters to maintain sample gases in their vapour state.

### 2 ATEX / IECEx CERTIFIED

Certified for use in category 2 zone 1 hazardous areas.

### 3 PISTON SENSING ELEMENT

Perfect for use in challenging conditions.

### 4 OPTIONAL ENTRY POINTS FOR CABLE SUPPLY

Power cable supply from left, right or bottom side to suit installation requirements.

## STANDARD MATERIALS OF CONSTRUCTION

PART	MATERIALS
Body and Bonnet	AISI 316/316L Stainless Steel (UNS S31600/S31603)
Main Valve Pin	AISI 316/316L Stainless Steel (UNS S31600/S31603)
Soft Seat	PEEK™
Valve Spring	Inconel® X750
Piston	AISI 316/316L Stainless Steel (UNS S31600/S31603)
O-Rings	FKM/FPM
Electric Enclosure	Feraloy Iron Alloy

## SPECIFICATION

Max. Rated Inlet Pressure	414 bar (6,000 psi)
Outlet Ranges	Up to 150 bar (2,175 psi)
Design Proof Pressure	150% max. working pressure
Seat Leakage	In accordance with ANSI/FCI 70-3
Weight	4.6kg (10.1lbs)

NOTE: Product availability and specifications contained herein are subject to change without notice. Consult local distributor or factory for potential revisions and/or service related issues. Pressure Tech Ltd support with product selection recommendations only - it is the users responsibility to ensure the product is suitable for their specific application requirements.



DESIGNED AND BUILT IN THE UK

**PRESSURE TECH LTD**  
 Unit 24, Graphite Way, Hadfield, Glossop, Derbyshire, UK, SK13 1QH  
 T +44 (0)1457 899 307  
 E sales@pressure-tech.com  
 W www.pressure-tech.com

090919

PAGE:  
1 OF 4

# XHR311 Datasheet

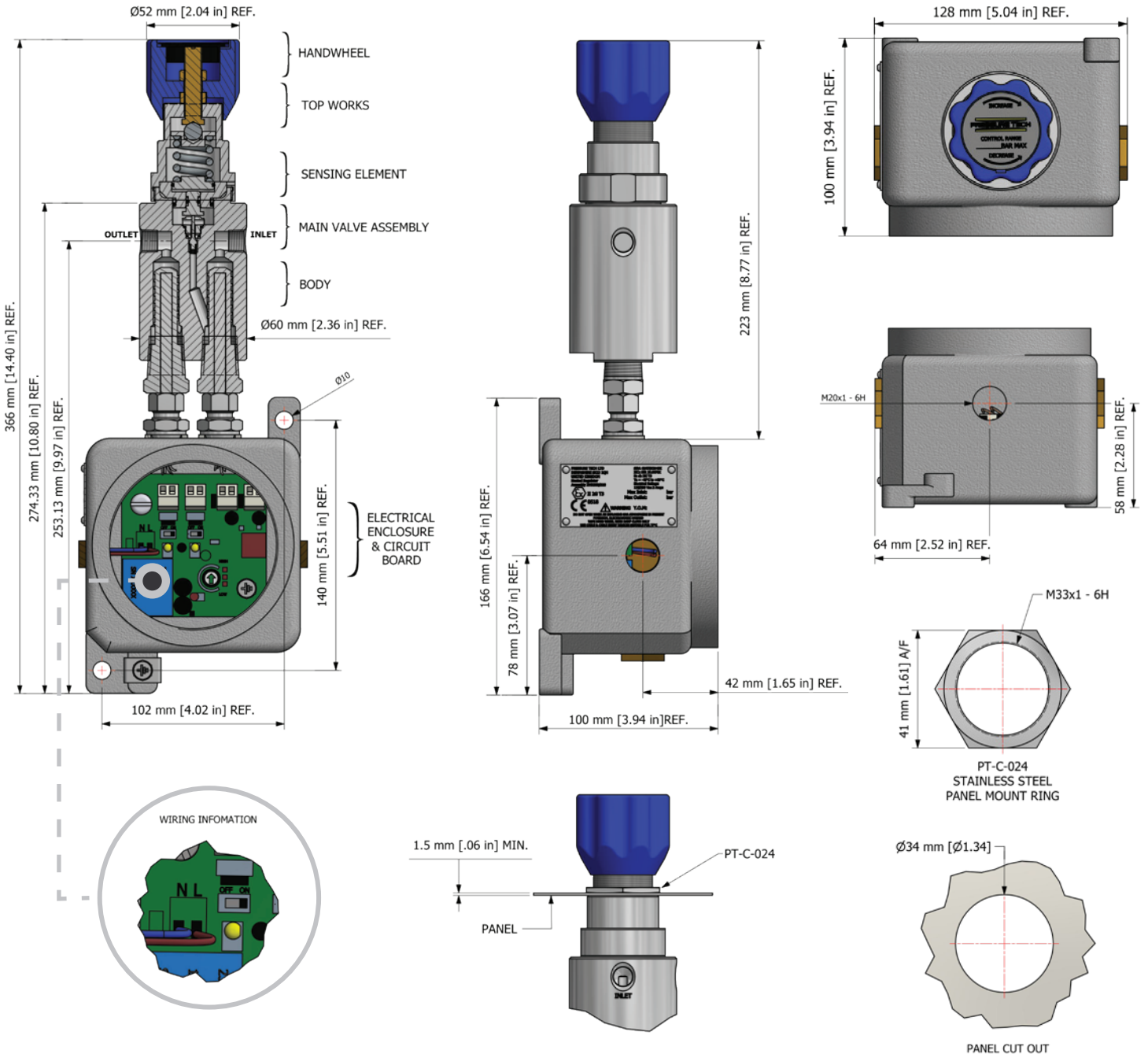
DUAL-HEATED PRESSURE REGULATOR



Gas  
  Liquid  
  Diaphragm  
  Piston  
  Self-Venting  
  Non-Venting  
 Max Inlet: 414 bar (6,000 psi)  
 Max Outlet: 150 bar (2,175 psi)  
 Cv 0.06

## DRAWINGS AND INSTALLATION DIMENSIONS

Dimensions shown for 1/4" NPT option - please contact the office for additional connections options.



**Note:**  
All gauge ports are 1/4" NPT as standard.

**NOTE:** Product availability and specifications contained herein are subject to change without notice. Consult local distributor or factory for potential revisions and/or service related issues. Pressure Tech Ltd support with product selection recommendations only - it is the users responsibility to ensure the product is suitable for their specific application requirements.



DESIGNED AND BUILT IN THE UK

**PRESSURE TECH LTD**  
 Unit 24, Graphite Way, Hadfield, Glossop, Derbyshire, UK, SK13 1QH  
 T +44 (0)1457 899 307  
 E sales@pressure-tech.com  
 W www.pressure-tech.com

090919

PAGE:  
2 of 4

# XHR311 Datasheet

DUAL-HEATED PRESSURE REGULATOR

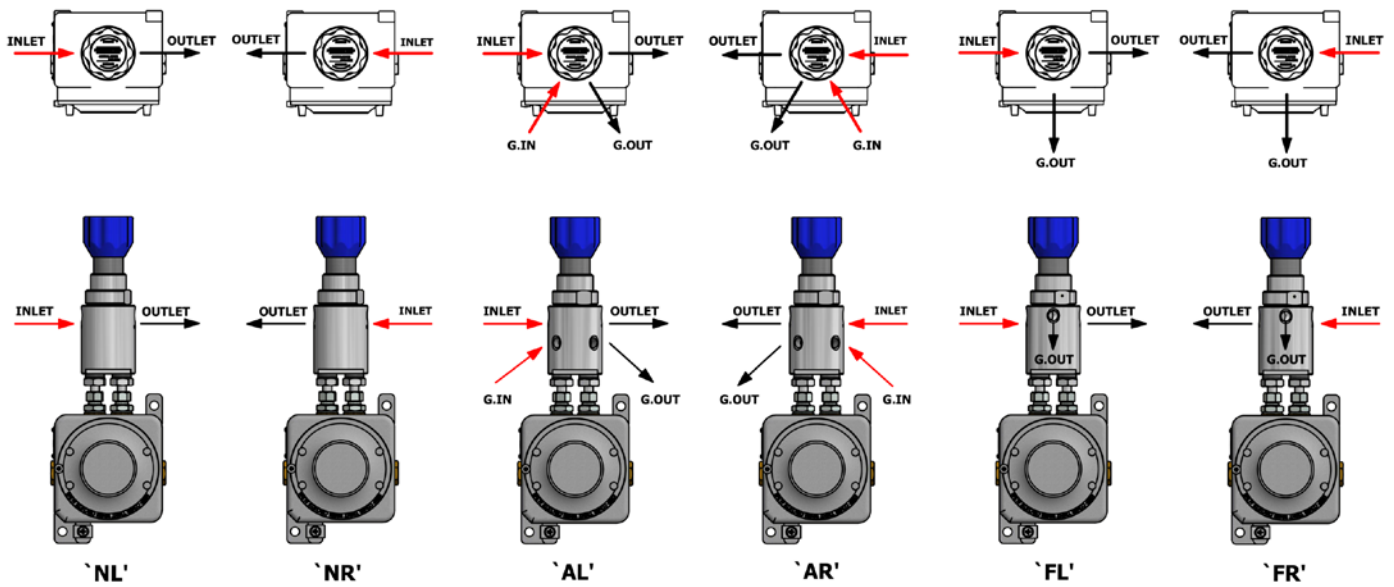


Gas  
  Liquid  
  Diaphragm  
  Piston  
  Self-Venting  
  Non-Venting  
 Max Inlet: 414 bar (6,000 psi)  
 Max Outlet: 150 bar (2,175 psi)  
 Cv 0.06

## FLOW CURVE

Please contact the office for further information.

## PORTING CONFIGURATIONS



### Notes:

'AL' and 'AR': Gauge ports are not in the same axis as inlet and outlet ports

Additional porting configurations are available - please contact the office for further information.

NOTE: Product availability and specifications contained herein are subject to change without notice. Consult local distributor or factory for potential revisions and/or service related issues. Pressure Tech Ltd support with product selection recommendations only - it is the users responsibility to ensure the product is suitable for their specific application requirements.



DESIGNED AND BUILT IN THE UK

**PRESSURE TECH LTD**  
 Unit 24, Graphite Way, Hadfield, Glossop, Derbyshire, UK, SK13 1QH  
 T +44 (0)1457 899 307  
 E sales@pressure-tech.com  
 W www.pressure-tech.com

090919

PAGE:  
3 OF 4

# XHR311 Datasheet

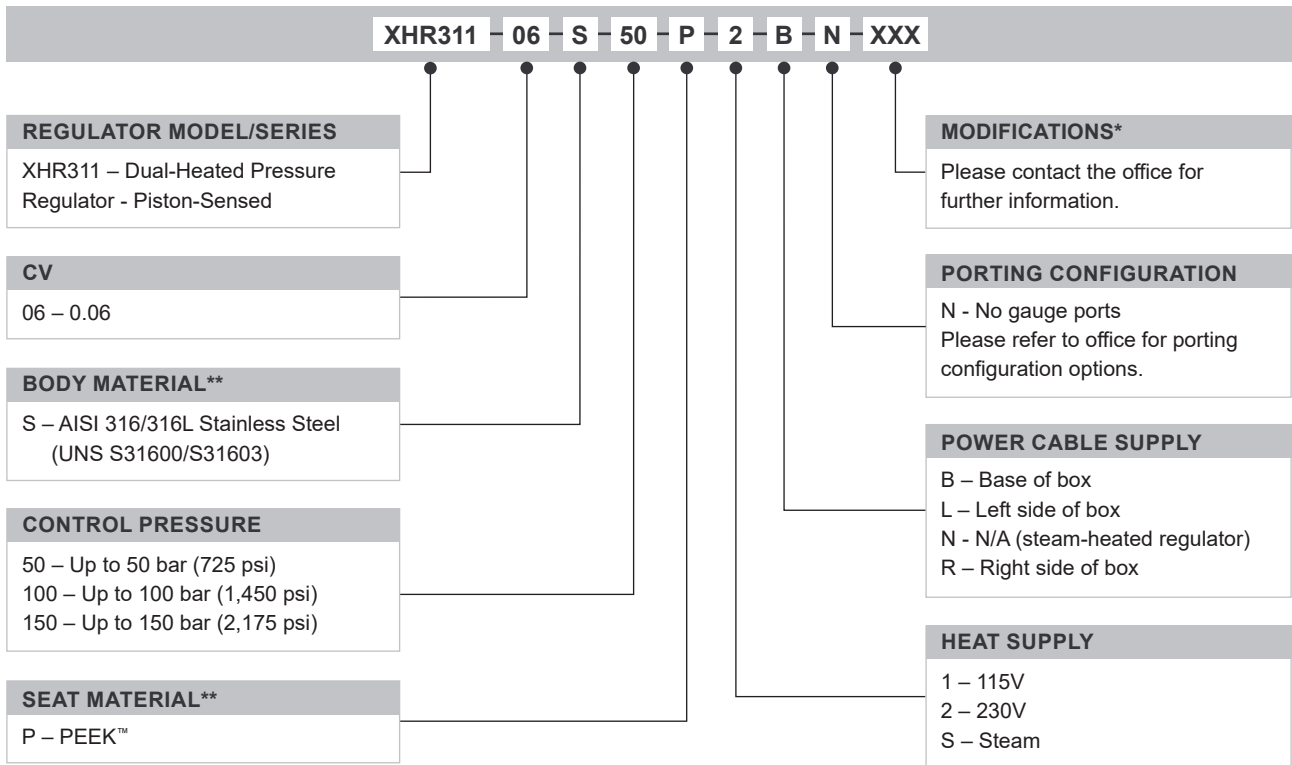
DUAL-HEATED PRESSURE REGULATOR



Gas  
  Liquid  
  Diaphragm  
  Piston  
  Self-Venting  
  Non-Venting  
 Max Inlet: 414 bar (6,000 psi)  
 Max Outlet: 150 bar (2,175 psi)  
 Cv 0.06

## ORDERING INFORMATION

To build a Pressure Tech part number, simply combine the characters identified below in sequence:



OPTIONAL EXTRAS		
	PART NUMBER	DESCRIPTION
Service Kit	SRK-XHR311-06-U-P-M2-V	PEEK™ seat and FKM/FPM seals
Panel Mounting Ring	PT-C-024	-

*Note:*  
Ancillary Equipment and additional Service Kit options also available.

TRADEMARK: PEEK™ is a trademark of Victrex PLC

\* Where applicable

\*\* Other materials may be available - please contact the office

NOTE: Product availability and specifications contained herein are subject to change without notice. Consult local distributor or factory for potential revisions and/or service related issues. Pressure Tech Ltd support with product selection recommendations only - it is the users responsibility to ensure the product is suitable for their specific application requirements.



DESIGNED AND BUILT IN THE UK

## Haldatec

Phone: +61 3 9872 5822 Email: [sales@haldatec.com.au](mailto:sales@haldatec.com.au) Website: [www.haldatec.com.au](http://www.haldatec.com.au)

090919

PAGE:  
4 OF 4