

Description

A remote monitoring system with significant processing capacity and high flexibility. Each device includes 8 configurable inputs and 5 outputs. The system offers a variety of power options with remote transmission through a GSM/GPRS modem. The devices are integrated in an RS-485 bus, allowing control from one modem of up to 256 devices. The system can be managed from an autonomous Central PC or an integrated Central PC in a standard SCADA system, through OPC.



Technical Characteristics

- 8 input configurable signals per device (0 -10V, 4 - 20 mA, Pt-100 or digital on-off).
- 5 on-off outputs.
- Communication: GSM/GPRS short messages.
- RS-485 bus for the interconnection of the devices.
- Signal registration, including maximums and minimums.
- Various power supply types:
 - 12-24 VDC or 115-230 VAC.
 - Photovoltaic panels.
 - Autonomous long life battery.
 - Magnetic induction.
- IP65 cover.
- Galvanic isolation: 2.5 kV.

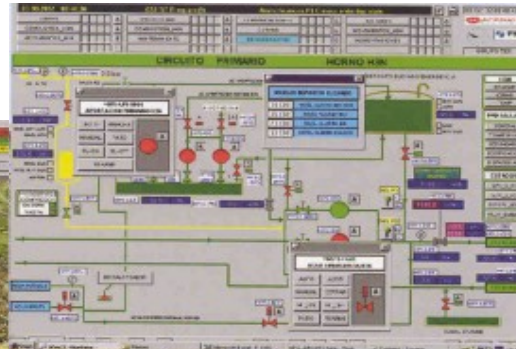


Typical Applications

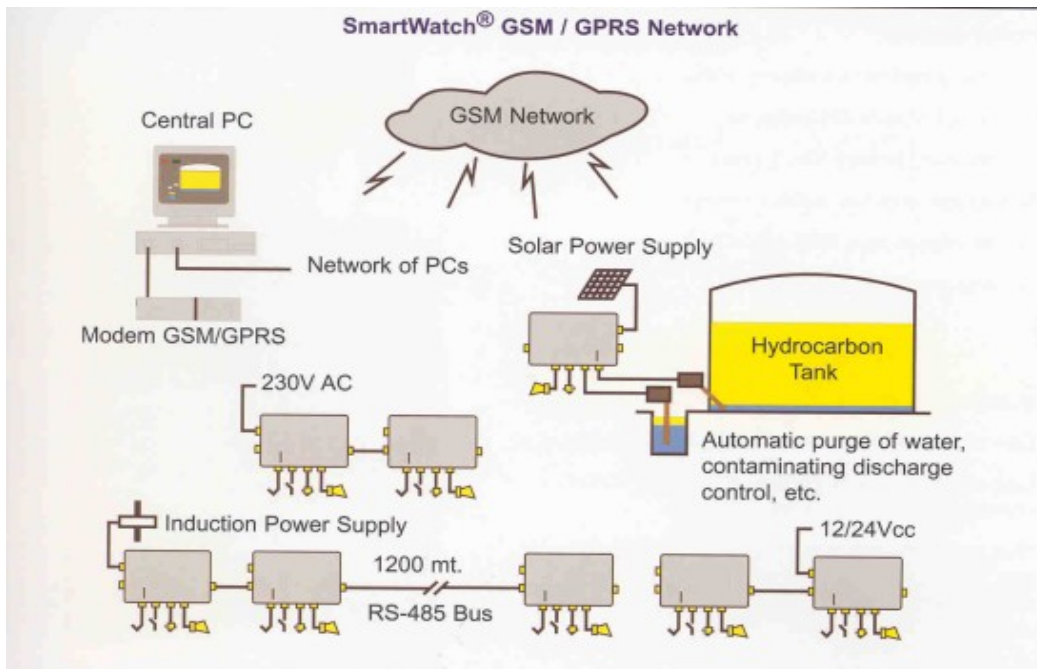
- Monitoring of equipment with difficult access or in a remote location, without needing to install cable.
- Monitoring of substations and electric transformers, waste water treatment tanks, etc.
- Pollution prevention and environmental protection.
- Continuous detection of hydrocarbons in water.
- Alarm systems.

Signal Reception

- Automatic alarm
- Periodic program.
- Can be user customised



- Up to 8 different signals per device
- Up to 256 devices per loop (modem)



[Haldatec](http://www.haldatec.com.au)

Phone: +61-3-9872-5822 • Fax: +61-3-9872-5129
 Email: sales@haldatec.com.au • Web Site: www.haldatec.com.au

